



Replacement Part | Specification

Model (SKU)

PT100-511

PermaTile™ Series Rough-In
'X' Corner Tile Wall Anchor

Applicable Features & Installation Types

- Stainless steel construction with stabilizing brackets, inserts and protective thumb screws
- Mortar-based installation system (No mastic or organic adhesives allowed)
- Wall anchor configured specifically for TileWare accessories
- Refer to installation instructions before use
- Tested by TCNA
- BUY US ONCE FOR LIFE



For Tile

T

Tile Thickness Range
5/32" – 1/2" (4mm – 13mm)

- Promessa™ Series
 - Baskets
 - **T100-050**

Mates with Trim Only

TX

Tile Thickness Range
5/32" – 1/2" (4mm – 13mm)

- Promessa™ Series
 - Baskets
 - **TX100-050**



p: 828-322-9273 | f: 828-304-1076
tilewareproducts.com | info@tilewareproducts.com

page 1 of 2
TW-F02-204-PT100 | REV: 8-12-20



Replacement Part | Specification

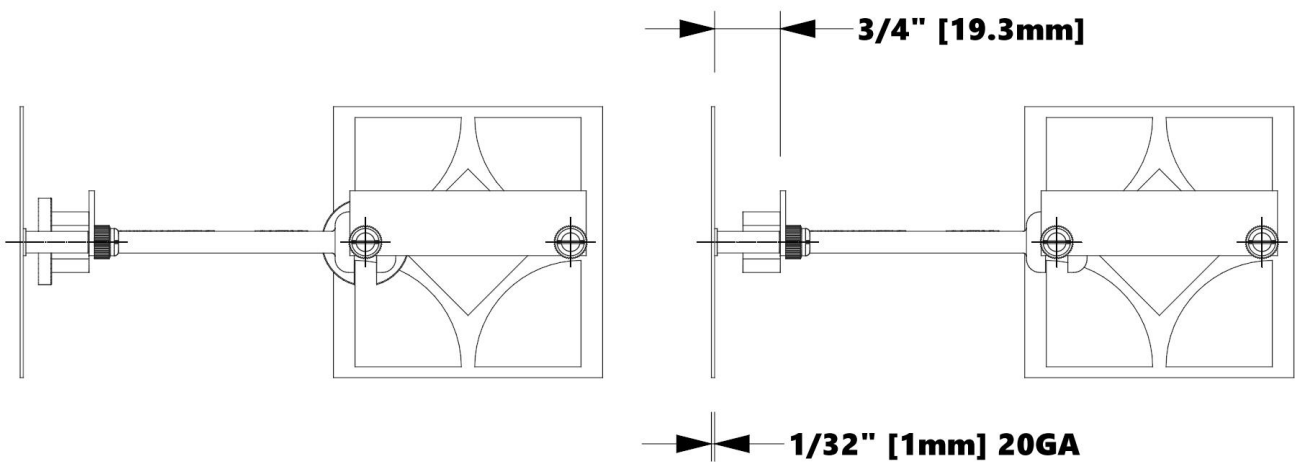
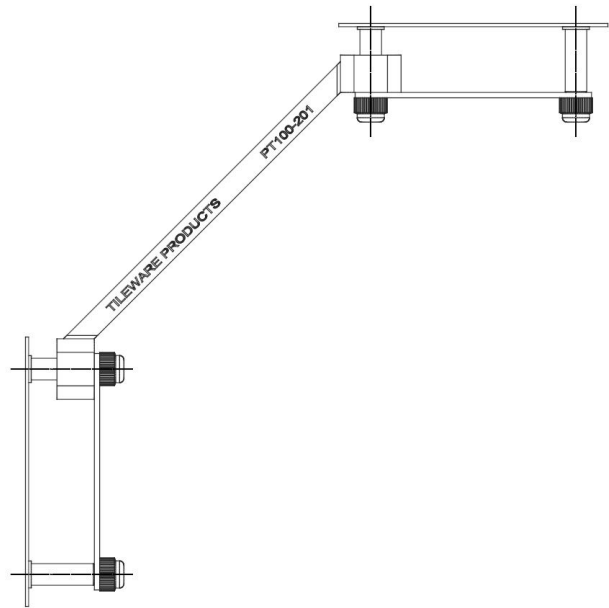
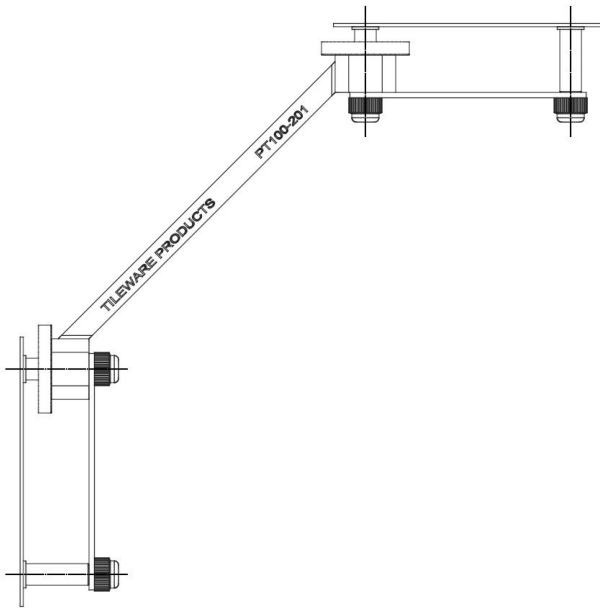
Model (SKU)

PT100-511

PermaTile™ Series Rough-In
'X' Corner Tile Wall Anchor

Combine stabilizer and inserts
For Tile Materials
5/32" - 1/4" (4mm - 6mm)

Use stabilizer only
For Tile Materials
5/16" - 1/2" (8mm - 13mm)



Product Dimensions (units are in both inches and mm)

Weight

0.226 lb / 0.103 kg

300

