

Replacement Part | Specification

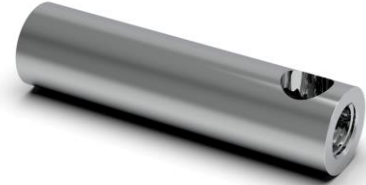
Model (SKU)

C232-001-Finish

2-13/16" Sleeve
With Attachment Hole

Applicable Features & Installation Types

- Stainless steel construction
- BUY US ONCE FOR LIFE



Color (Metal Finish)

- PC Polished Chrome
- BN Brushed Nickel
- ORB Oil Rub Bronze

For Tile

T

Tile Thickness Range
5/32" – 1/2" (4mm – 13mm)

- Promessa™ Series
 - Towel Bars
 - T102-011
 - T102-012
 - Toilet Paper Holders
 - T105-011
 - T105-012

For Trim Only

TX

Tile Thickness Range
5/32" – 1/2" (4mm – 13mm)

- Promessa™ Series
 - Towel Bars
 - TX102-011
 - TX102-012
 - Toilet Paper Holders
 - TX105-011
 - TX105-012

For Drywall

G

Gypsum Wallboard Surfaces

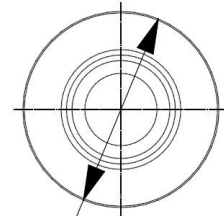
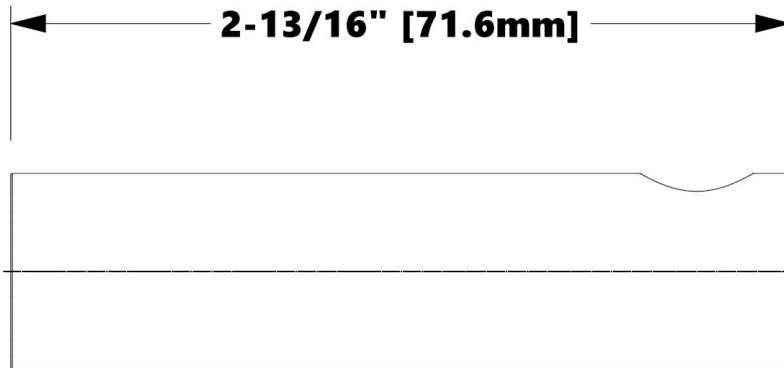
- Promessa™ Series
 - Towel Bars
 - G102-011
 - G102-012
 - Toilet Paper Holders
 - G105-011
 - G105-012

Replacement Part | Specification

Model (SKU)

C232-001-Finish

2-13/16" Sleeve
With Attachment Hole



Dia. 23/32" [18mm]

Product Dimensions (units are in both inches and mm)

Weight

0.234 lb / 0.106 kg

395A