

PRODUCT SPECIFICATION SHEET

PART: G105-012

PROMESSA™ SERIES

TOILET TISSUE HOLDER (TRADITIONAL) KIT

[GYPSUM WALLBOARD INSTALLATION SYSTEMS]

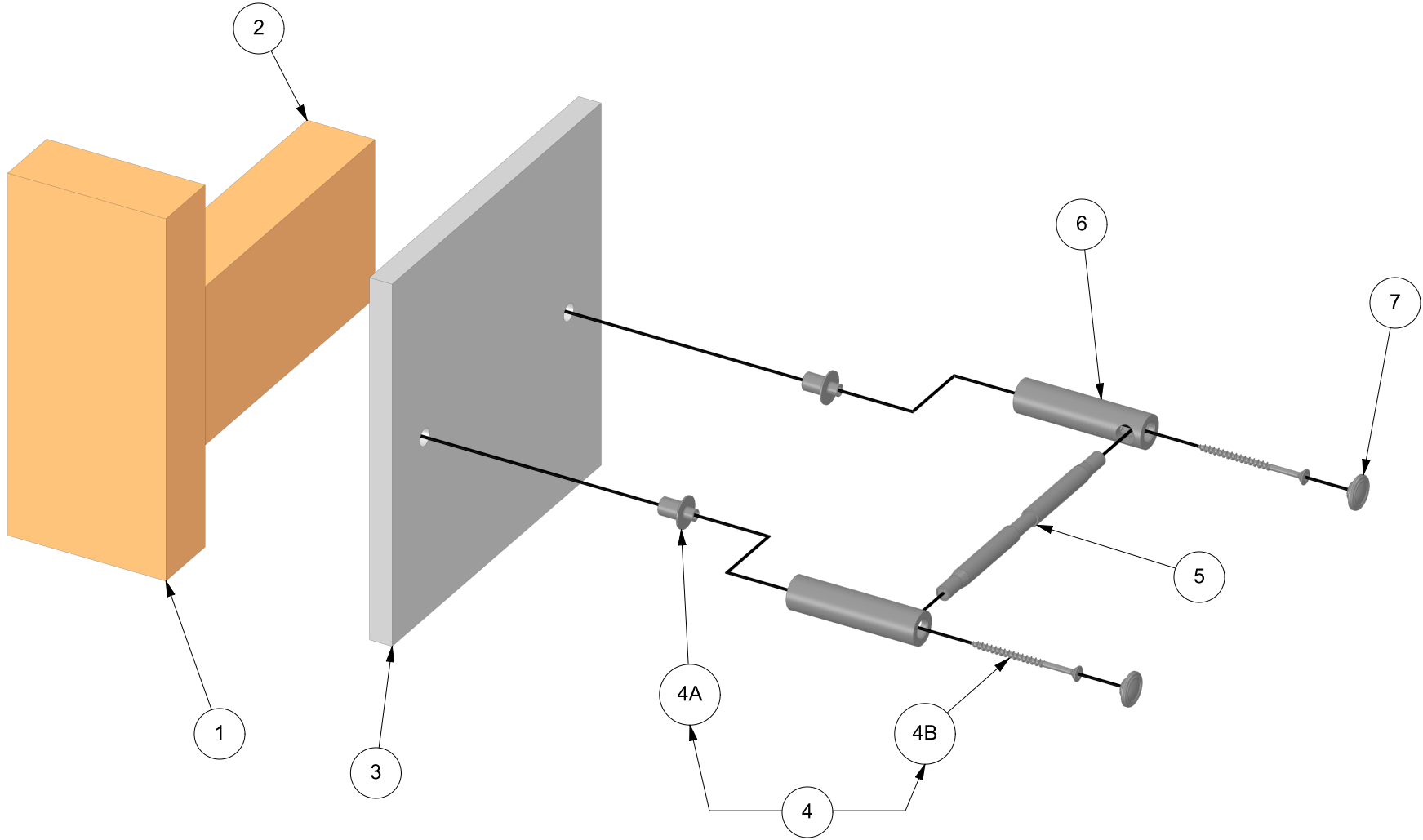
FINISHES: PC, BN, ORB

FASTENER SYSTEM WORKS WITH ALL GYPSUM WALLBOARD TOILET TISSUE HOLDER MODELS

FASTENER SYSTEM ONLY WORKS WITH 1/2" GYPSUM WALLBOARD (GWB) MATERIALS

FASTENER SYSTEM ONLY WORKS WITH WOOD BLOCKING (DO NOT USE WALL ANCHORS)

REFER TO INSTALLATION INSTRUCTIONS BEFORE USE



TW-ENG5

ERP PART #	REFERENCED ABOVE	APPROVALS	DATE
DWG #	659B	RLS	11/27/17
SHEET 1 OF 3	SCALE 1:3		
WEIGHT:	0.648 LB	CUBED:	2.397 IN ³



www.tilewareproducts.com

Office (828) 322-9273 Fax (828) 304-1076

PRODUCT SPECIFICATION SHEET

PART: G105-012

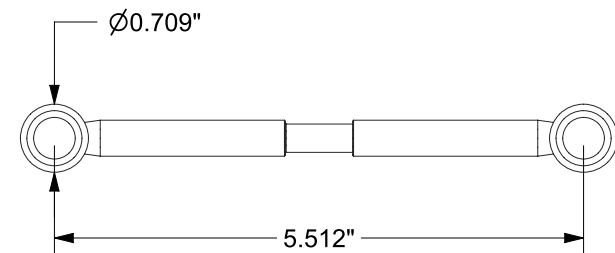
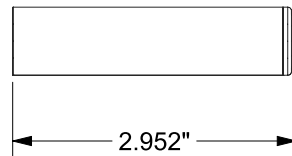
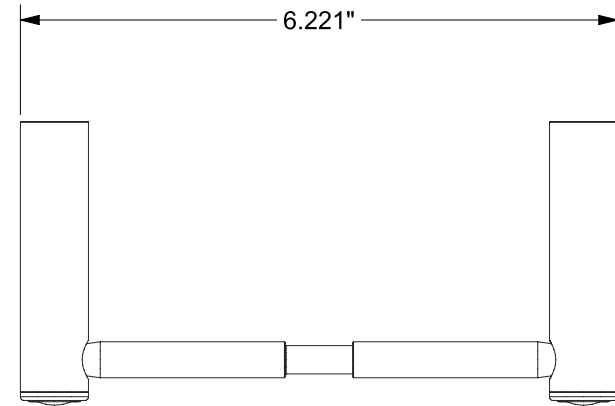
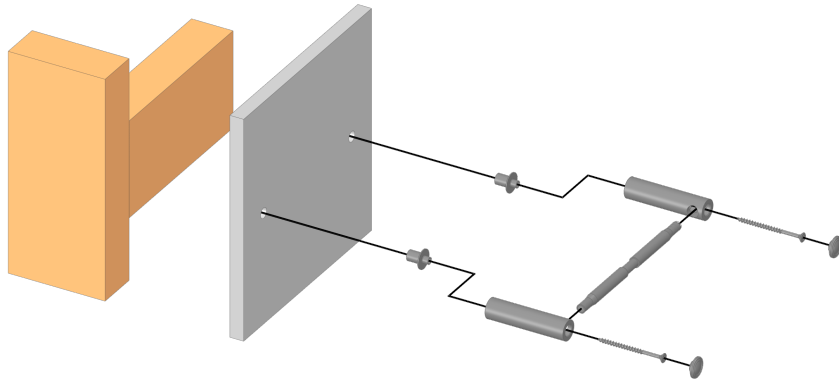
PROMESSA™ SERIES

TOILET TISSUE HOLDER (TRADITIONAL) KIT

[GYPSUM WALLBOARD INSTALLATION SYSTEMS]

FINISHES: PC, BN, ORB

FASTENER SYSTEM WORKS WITH ALL GYPSUM WALLBOARD TOILET TISSUE HOLDER MODELS
 FASTENER SYSTEM ONLY WORKS WITH 1/2" GYPSUM WALLBOARD (GWB) MATERIALS
 FASTENER SYSTEM ONLY WORKS WITH WOOD BLOCKING (DO NOT USE WALL ANCHORS)
 REFER TO INSTALLATION INSTRUCTIONS BEFORE USE



ERP PART #	REFERENCED ABOVE	APPROVALS	DATE
DWG #	659B	RLS	11/27/17
SHEET 2 OF 3	SCALE 1:2		
WEIGHT:	0.648 LB	CUBED:	2.397 IN ³

TW-ENG5





www.tilewareproducts.com

Office (828) 322-9273 Fax (828) 304-1076

PRODUCT SPECIFICATION SHEET

PART: G105-012






PROMESSA™ SERIES

TOILET TISSUE HOLDER (TRADITIONAL) KIT

[GYPSUM WALLBOARD INSTALLATION SYSTEMS]

FINISHES: PC, BN, ORB

FASTENER SYSTEM WORKS WITH ALL GYPSUM WALLBOARD TOILET TISSUE HOLDER MODELS
 FASTENER SYSTEM ONLY WORKS WITH 1/2" GYPSUM WALLBOARD (GWB) MATERIALS
 FASTENER SYSTEM ONLY WORKS WITH WOOD BLOCKING (DO NOT USE WALL ANCHORS)
 REFER TO INSTALLATION INSTRUCTIONS BEFORE USE

MODEL IMAGE	REF #	PART #	DESCRIPTION	MATERIAL	QTY	MODEL IMAGE	REF #	PART #	DESCRIPTION	MATERIAL	QTY
	1		STUD WALL PARTITION	WOOD			5	A230-001	TISSUE HOLDER	ASSEMBLY	1
	2		STUD WALL BLOCKING	WOOD			6	C232-001	2-13/16" SLEEVE	STAINLESS STEEL	2
	3		WALLBOARD PANEL	GYPSUM PANEL			7	C232-005	11/16" TRADITIONAL CAP	STAINLESS STEEL	2
	4	PG100-507	1/2" GYPSUM WALLBOARD FASTENER	ASSEMBLY	1						
	4A	C200-044	1/2" SPACER	ALUMINUM	1						
	4B	C200-041	# 8 X 2-1/2" PHILLIPS FLAT HEAD SCREW	ZINC - PLATED	1						

TW-ENG5

ERP PART #	REFERENCED ABOVE	APPROVALS	DATE
DWG #	659B	RLS	11/27/17
SHEET 3 OF 3	SCALE N/A		
WEIGHT:	0.648 LB	CUBED:	2.397 IN ³



www.tilewareproducts.com

Office (828) 322-9273 Fax (828) 304-1076