

PART SPECIFICATION SHEET

PART: A220-422

CODES / STANDARDS COMPLIANCE

ADA
COMPLIANT



VICTORIA™ SERIES

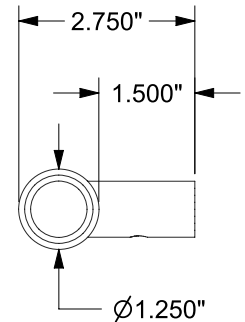
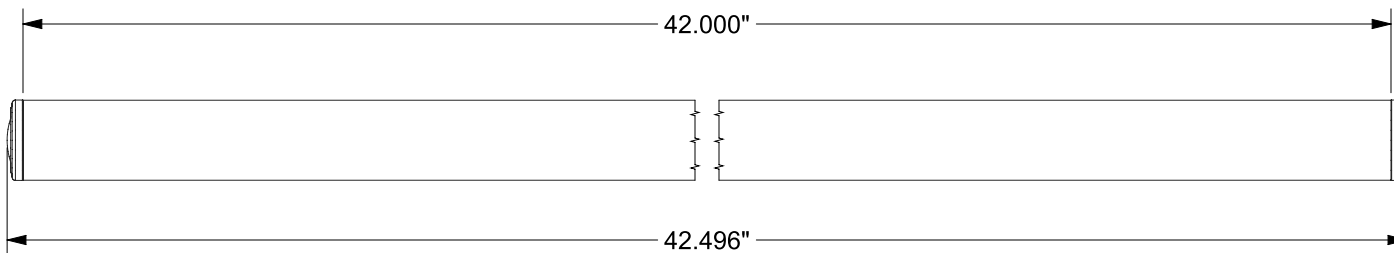
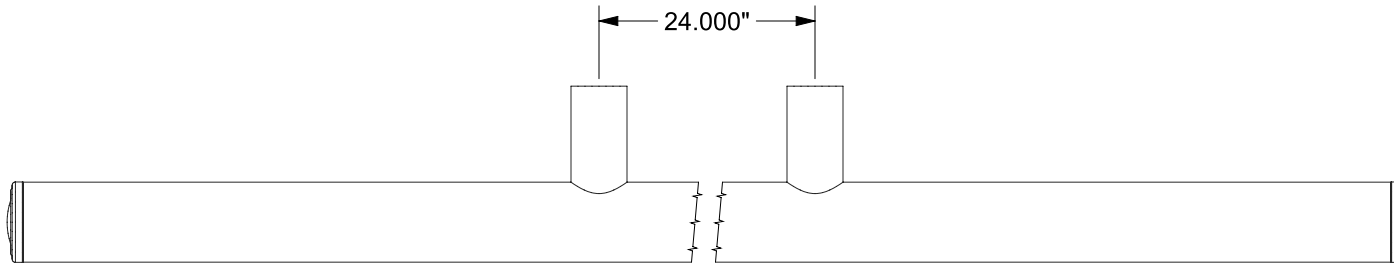
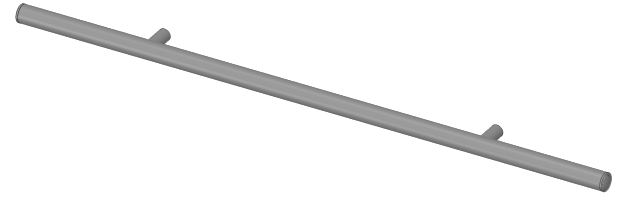
42" STRAIGHT GRAB BAR (TRADITIONAL)

MEETS OR EXCEEDS THE FOLLOWING AT DATE OF MANUFACTURE:

[ALL INSTALLATION SYSTEMS]

FINISHES: PC, BN, ORB, SP, SB

• ALL APPLICABLE US FEDERAL AND STATE MATERIAL REGULATIONS



ERP PART #	A220-422	APPROVALS	DATE
DWG #	469A	RLS	8/6/14
SHEET 1 OF 1	SCALE 1:3		
WEIGHT:	2.304 LB	CUBED:	8.644 IN ³

TW-ENG4



TileWare Products
www.tilewareproducts.com

Office (828) 322-9273 Fax (828) 304-1076