

PART SPECIFICATION SHEET

PART: A220-362

CODES / STANDARDS COMPLIANCE

ADA
COMPLIANT



VICTORIA™ SERIES

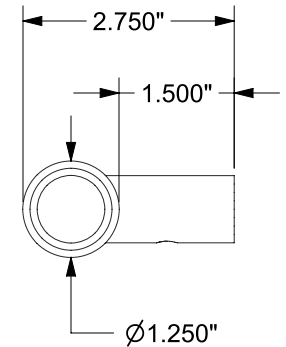
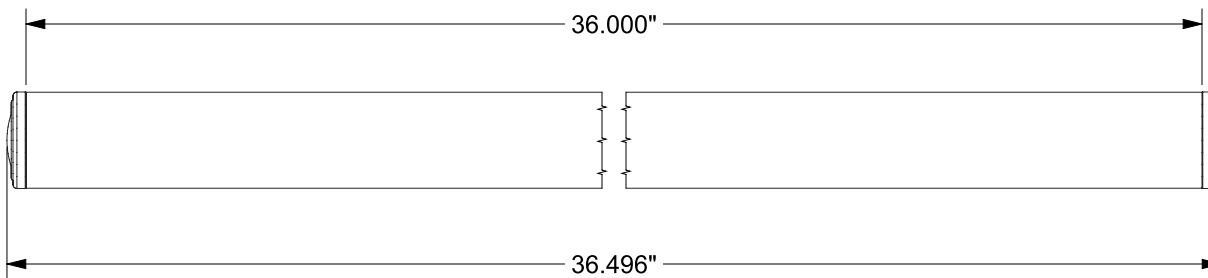
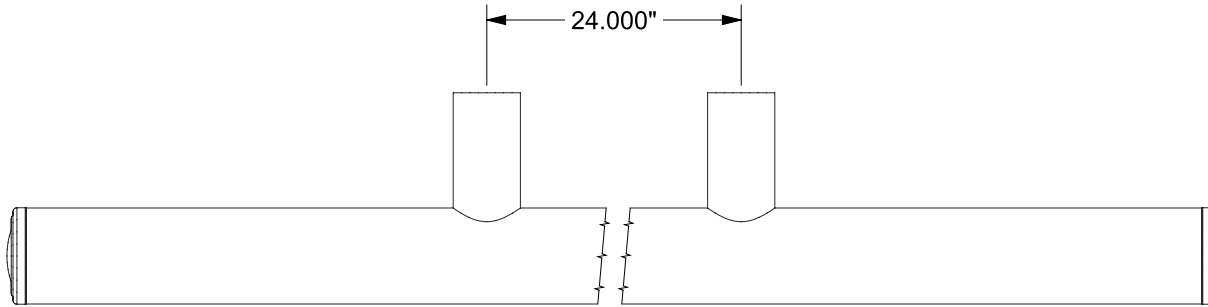
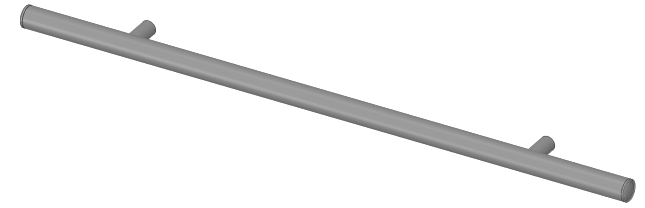
36" STRAIGHT GRAB BAR (TRADITIONAL)

MEETS OR EXCEEDS THE FOLLOWING AT DATE OF MANUFACTURE:

[ALL INSTALLATION SYSTEMS]

FINISHES: PC, BN, ORB

• ALL APPLICABLE US FEDERAL AND STATE MATERIAL REGULATIONS



TW-ENG4



TileWare Products

www.tilewareproducts.com

ERP PART #	A220-362	APPROVALS	DATE
DWG #	441	RLS	8/11/14
SHEET 1 OF 1	SCALE 2:5		
WEIGHT:	2.066 LB	CUBED:	7.747 IN ³

Office (828) 322-9273 Fax (828) 304-1076