

PART SPECIFICATION SHEET

PART: A220-361

CODES / STANDARDS COMPLIANCE

ADA
COMPLIANT



VICTORIA™ SERIES

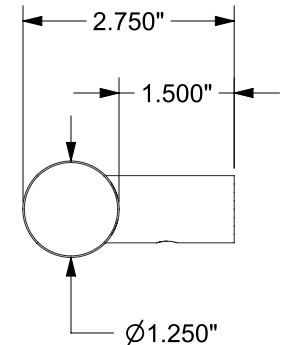
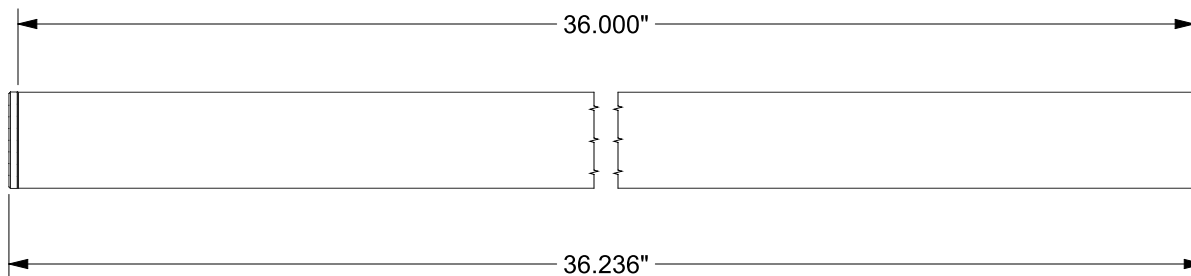
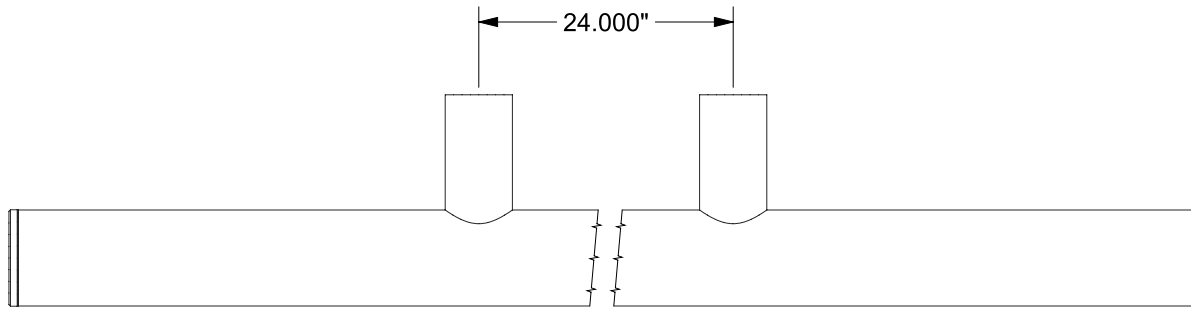
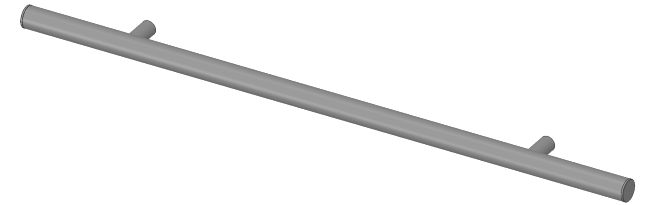
36" STRAIGHT GRAB BAR (CONTEMPORARY)

MEETS OR EXCEEDS THE FOLLOWING AT DATE OF MANUFACTURE:

[ALL INSTALLATION SYSTEMS]

FINISHES: PC, BN, ORB

• ALL APPLICABLE US FEDERAL AND STATE MATERIAL REGULATIONS



ERP PART #	A220-361	APPROVALS	DATE
DWG #	440	RLS	8/11/14
SHEET 1 OF 1	SCALE 2:5		
WEIGHT:	2.052 LB	CUBED:	7.700 IN ³

TW-ENG4



TileWare Products
www.tilewareproducts.com

Office (828) 322-9273 Fax (828) 304-1076