

PART SPECIFICATION SHEET

PART: A220-181

CODES / STANDARDS COMPLIANCE

VICTORIA™ SERIES

18" STRAIGHT GRAB BAR (CONTEMPORARY)

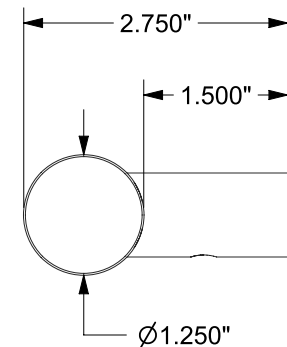
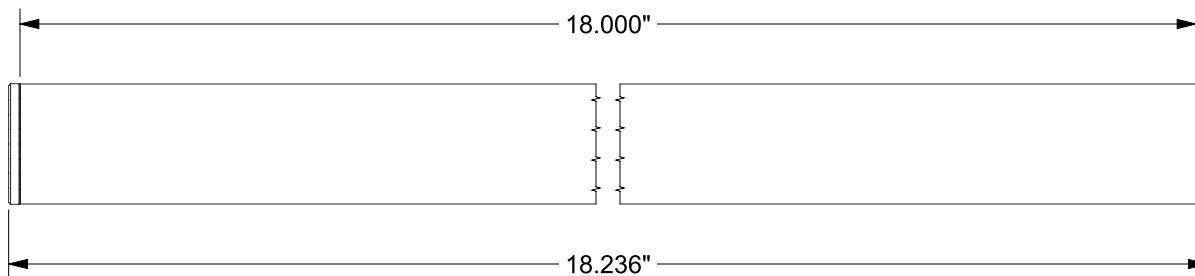
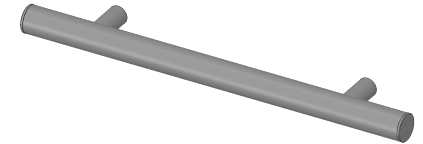
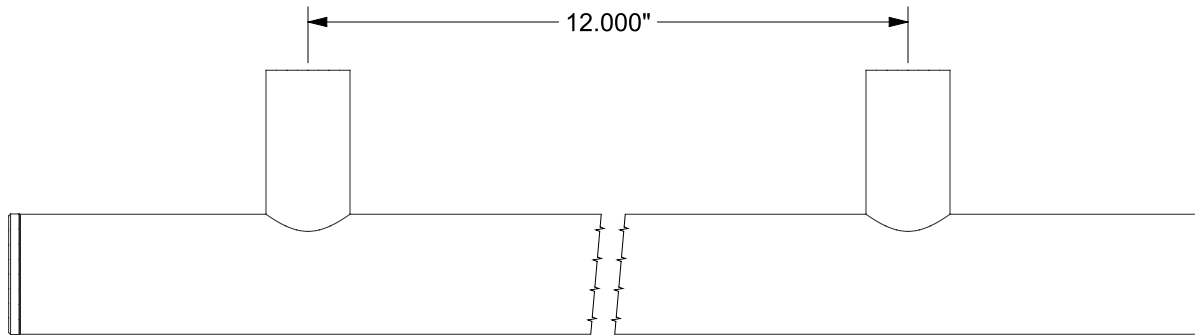
MEETS OR EXCEEDS THE FOLLOWING AT DATE OF MANUFACTURE:

[ALL INSTALLATION SYSTEMS]

FINISHES: PC, BN, ORB

• ALL APPLICABLE US FEDERAL AND STATE MATERIAL REGULATIONS

ADA
COMPLIANT



ERP PART #	A220-181	APPROVALS	DATE
DWG #	430	RLS	8/8/14
SHEET 1 OF 1	SCALE 1:2		
WEIGHT:	1.274 LB	CUBED:	5.009 IN ³

TW-ENG4



TileWare Products
www.tilewareproducts.com

Office (828) 322-9273 Fax (828) 304-1076