

PART SPECIFICATION SHEET

PART: C210-001

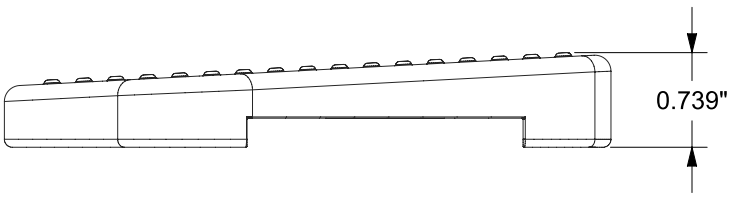
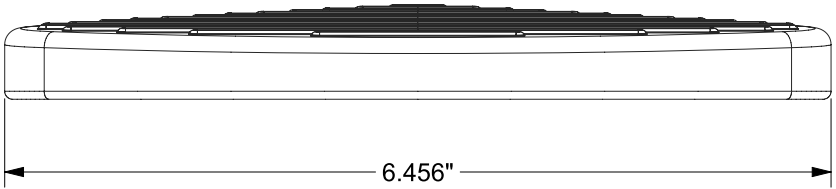
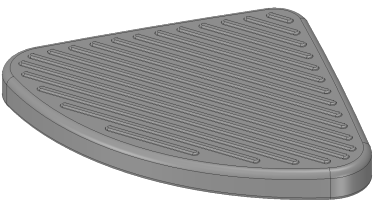
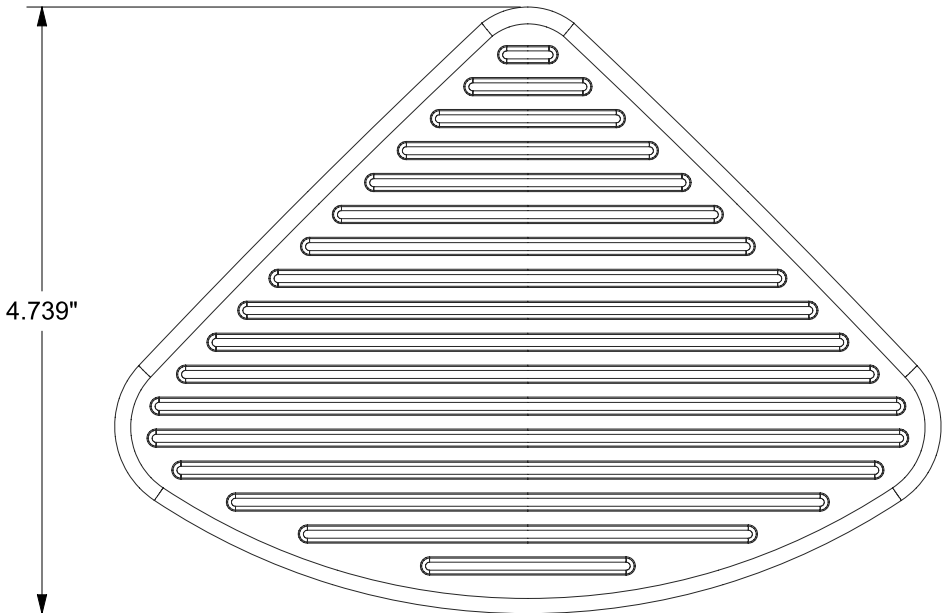
VICTORIA™ SERIES

FOOT PROP, TOP

COMPATIBLE WITH LISTED MODELS

FINISHES: PC, BN, ORB

T210-001



TW-ENG4



TileWare Products

www.tilewareproducts.com

Office (828) 322-9273 Fax (828) 304-1076

ERP PART #	C210-001	APPROVALS	DATE
DWG #	371	RLS	7/9/14
SHEET 1 OF 1	SCALE 2:3		
WEIGHT:	1.151 LB	CUBED:	4.660 IN³